

SAVE THESE INSTRUCTIONS

DEALER: These instructions MUST be given to the user of this product.

NOTE: Check ALL parts for shipping damage. If shipping damage is noted, DO NOT use. Contact carrier/dealer for further instruction.

⚠ WARNING

- **DO NOT** use this product or any available optional equipment without first completely reading and understanding these instructions and any additional instructional material such as owner's manuals, service manuals or instruction sheets supplied with this product or optional equipment. If you are unable to understand the warnings, cautions or instructions, contact a healthcare professional, dealer or technical personnel before attempting to use this equipment - otherwise, injury or damage may occur.
- Each individual should **ALWAYS** consult with their physician or therapist to determine proper adjustment and usage.
- **ALWAYS** observe the weight limit on the labeling of your product. Check that all labels are present and legible. Replace if necessary.
- If using the Rollator for walking, the user **MUST** be able to support the majority of their own weight. Please seek advice from your therapist to determine the appropriateness of this device.
- The Rollator can provide ambulatory assistance for an individual weighing up to 285 lbs (130 kg), including the weight of the contents of the basket and tray. The seat can support an individual weighing up to 285 lbs (130 kg).
- **DO NOT** use the rollator as a wheelchair or transport device. The Rollator is **NOT** intended for propelling while seated.
- The brakes **MUST** be locked before using the seat. When using the rollator in a stationary standing position, the hand brakes **MUST** be locked.
- **DO NOT** use the rollator on an escalator.
- A physical/occupational therapist should assist in the height adjustment for maximum support and correct brake activation.
- Care should be taken to ensure that all hand and height adjustments are secure, and that casters and moving objects are in good working order before using this or any mobility aid.
- **All casters MUST** be in contact with the floor at all times during use. This will ensure the rollator is properly balanced.
- **ALWAYS** observe the weight limit on the labeling of your product. Check that all labels are present and legible. Replace if necessary.
- The basket and tray have a weight limitation of 11 lbs (5 kg). Items placed in or on the basket or tray should **NOT** protrude from the basket or tray.
- If push handles are exposed to extreme temperature (above 100°F or below 32°F), high humidity and/or becomes wet, prior to use, ensure hand grips **DO NOT** twist on rollator handle - otherwise damage or injury may occur.
- After installation and before use, ensure that all attaching hardware is tightened securely.
- **DO NOT** hang anything from the frame of the rollator. Items should be placed in the basket or on the tray.

⚠ ACCESSORIES WARNING

- Invacare products are specifically designed and manufactured for use in conjunction with Invacare accessories. Accessories designed by other manufacturers have not been tested by Invacare and are not recommended for use with Invacare products.

For more information regarding Invacare products, parts, and services, please visit www.invacare.com

Unfolding the Rollator

NOTE: For this procedure, refer to FIGURE 1.

1. If the frame tube lock is in place on both frame tubes, rotate it up to unlock.
2. Push the handles and frame tubes away from each other to unfold the rollator (Detail "A").

⚠ WARNING

Pinch points exist between the frame tubes and casters. Make sure hands and body are clear of all pinch points.

3. Push down on the seat frame tubes until the rollator is completely unfolded. Make sure that the locking mechanism underneath the seat engages on the pin on the seat frame tube. (Detail "B").

Adjusting Handle Height

NOTE: For this procedure, refer to FIGURE 2.

NOTE: There are height adjustment markings on the handles.

NOTE: The adjustable range from the floor is 29 to 38 inches.

1. On both sides of the rollator, loosen the knob and adjust the handle to the appropriate height for the user.
2. Tighten the knob.

Installing the Basket and Tray

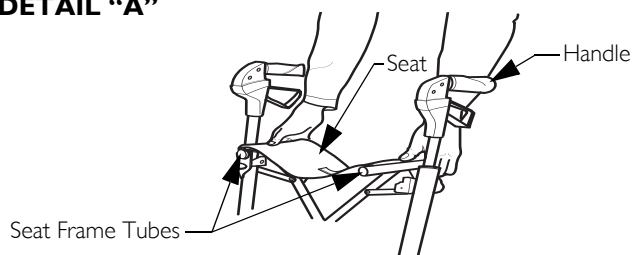
NOTE: For this procedure, refer to FIGURE 3.

⚠ WARNING

Pinch points exist between the frame tubes and casters. Make sure hands and body are clear of all pinch points.

1. Install the basket hooks into the slots on the side frames.
2. Put the tray onto the seat.

DETAIL "A"



DETAIL "B"

NOT Engaged on Pin

Engaged on pin

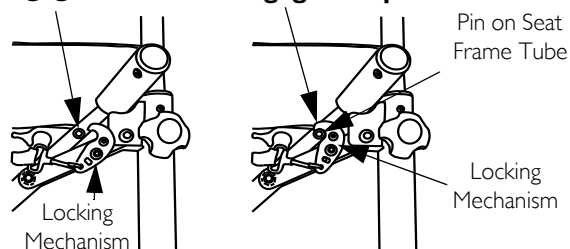


FIGURE 1 Unfolding the Rollator

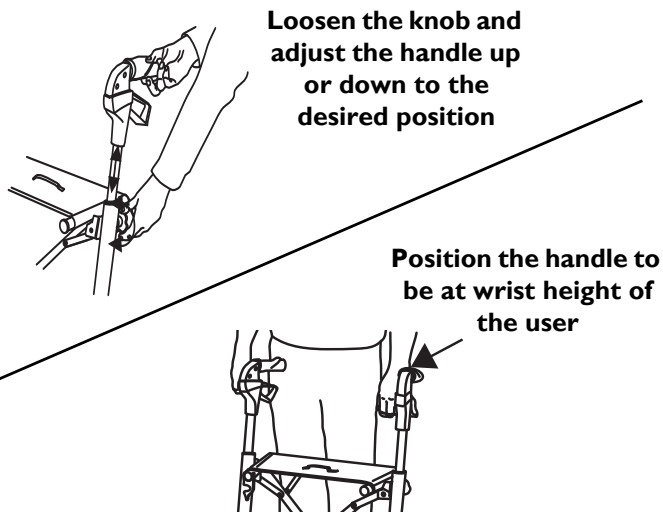


FIGURE 2 Using the Hand Brakes

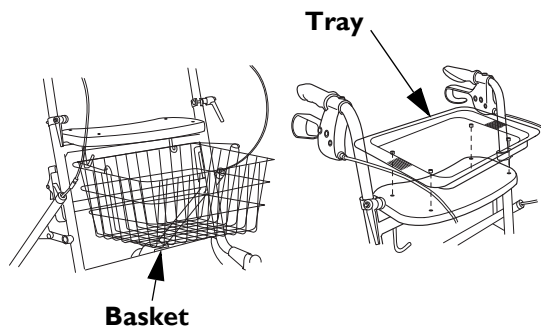


FIGURE 3 Installing the Basket and Tray

Attaching the Back Support

NOTE: For this procedure, refer to FIGURE 4.

1. Use a hex head screwdriver to remove two screws.
2. Remove the plastic cover.
3. Insert one side of the back support into the slot in the handle.
4. Attach the back support to the handle with two hex head screws.
5. Repeat STEPS 1-4 to install the opposite side of the back support.

Using the Hand Brakes

NOTE: For this procedure, refer to FIGURE 5.

1. Perform one of the following:
 - To Stop - Squeeze the brake handles up towards the rollator handles.
 - To Continue Mobility - Release the brake handle.
2. To lock, push down on the bottom portion of the brake handle.
3. To unlock, pull up on the top portion of the brake handle.

Using the Curb Climber

NOTE: For this procedure, refer to FIGURE 6.

Apply pressure to the Curb Climber for precise control when negotiating curbs.

Folding the Rollator

NOTE: For this procedure, refer to FIGURE 7.

1. Stand to the side of the rollator.
2. Pull up on the strap on the seat until a “pop” is heard and the locking mechanism disengages.
3. Push the seat tubes inwards towards each other.
4. Rotate the frame tube lock until it rests on the frame tube.
5. Lock the bracket onto the frame tube.

Care and Maintenance

1. Verify hand brake operation. Contact your dealer if brake adjustment is required.
2. If hand grips are loose, DO NOT use the rollator.
3. Periodically inspect the wheels for tightness, wear and damage.
4. Before use, make sure that the wheels are free of hair, lint and other debris.
5. Regular inspection of parts including hardware, brackets, and plastics, for deformation, corrosion, breakage, wear or compression is recommended.
6. Regular cleaning of the rollator is recommended. Wipe all surfaces with a damp cloth and allow the surfaces to dry before use.

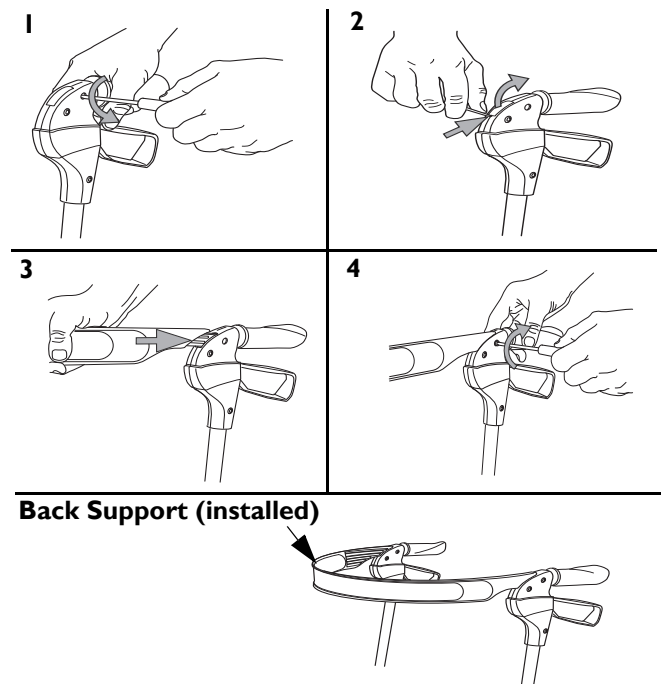


FIGURE 4 Attaching the Back Support

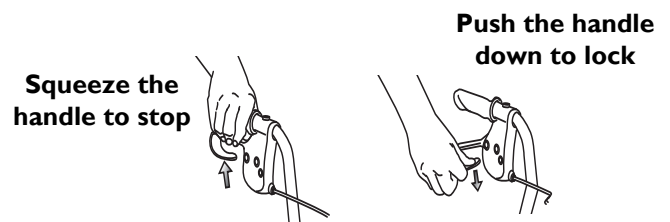


FIGURE 5 Using the Hand Brakes

Curb Climber

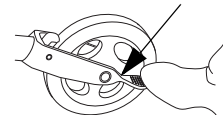


FIGURE 6 Using the Curb Climber

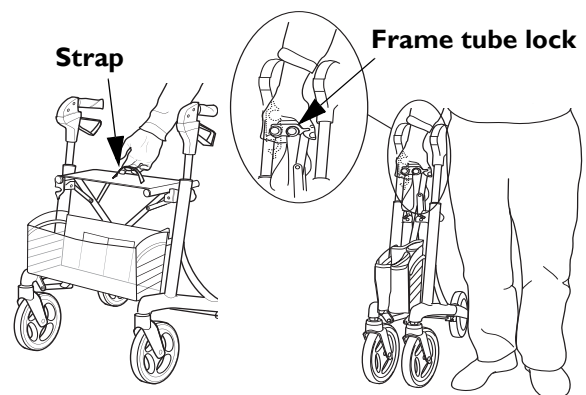


FIGURE 7 Folding the Rollator

LIMITED WARRANTY

PLEASE NOTE: THE WARRANTY BELOW HAS BEEN DRAFTED TO COMPLY WITH FEDERAL LAW APPLICABLE TO PRODUCTS MANUFACTURED AFTER JULY 4, 1975.

This warranty is extended only to the original purchaser/user of our products.

This warranty gives you specific legal rights and you may also have other legal rights which vary from state to state.

Invacare warrants the brakes to be free from defects in materials and workmanship for five years, and all other components for one year for the original purchaser (excluding tires and wheels). If within such warranty period any such product shall be proven to be defective, such product shall be repaired or replaced, at Invacare's option, with refurbished or new parts. This warranty does not include any labor or shipping charges incurred in replacement part installation or repair of any such product. Product repairs shall not extend this warranty - coverage for repaired product shall end when this limited warranty terminates. Invacare's sole obligation and your exclusive remedy under this warranty shall be limited to such repair and/or replacement.

For warranty service, please contact the dealer from whom you purchased your Invacare product. In the event you do not receive satisfactory warranty service, please write directly to Invacare at the address on the back page. Provide dealer's name, address, model number, date of purchase, indicate nature of the defect and, if the product is serialized, indicate the serial number.

Invacare Corporation will issue a return authorization. The defective unit or parts must be returned for warranty inspection using the serial number, when applicable, as identification within thirty (30) days of return authorization date. **DO NOT** return products to our factory without our prior consent. C.O.D. shipments will be refused; please prepay shipping charges.

LIMITATIONS AND EXCLUSIONS: THE WARRANTY SHALL NOT APPLY TO PROBLEMS ARISING FROM NORMAL WEAR OR FAILURE TO ADHERE TO THE ENCLOSED INSTRUCTIONS. IN ADDITION, THE FOREGOING WARRANTY SHALL NOT APPLY TO SERIAL NUMBERED PRODUCTS IF THE SERIAL NUMBER HAS BEEN REMOVED OR DEFACED; PRODUCTS SUBJECTED TO NEGLIGENCE, ACCIDENT, IMPROPER OPERATION, MAINTENANCE OR STORAGE; OR PRODUCTS MODIFIED WITHOUT INVACARE'S EXPRESS WRITTEN CONSENT INCLUDING, BUT NOT LIMITED TO: MODIFICATION THROUGH THE USE OF UNAUTHORIZED PARTS OR ATTACHMENTS; PRODUCTS DAMAGED BY REASON OF REPAIRS MADE TO ANY COMPONENT WITHOUT THE SPECIFIC CONSENT OF INVACARE; PRODUCTS DAMAGED BY CIRCUMSTANCES BEYOND INVACARE'S CONTROL; PRODUCTS REPAIRED BY ANYONE OTHER THAN AN INVACARE DEALER, SUCH EVALUATION SHALL BE SOLELY DETERMINED BY INVACARE.

THE FOREGOING EXPRESS WARRANTY IS EXCLUSIVE AND IN LIEU OF ANY OTHER EXPRESS WARRANTIES WHATSOEVER, WHETHER EXPRESS OR IMPLIED, INCLUDING THE IMPLIED WARRANTIES OF MERCHANTABILITY AND FITNESS FOR A PARTICULAR PURPOSE AND THE SOLE REMEDY FOR VIOLATIONS OF ANY WARRANTY WHATSOEVER, SHALL BE LIMITED TO REPAIR OR REPLACEMENT OF THE DEFECTIVE PRODUCT PURSUANT TO THE TERMS CONTAINED HEREIN. THE APPLICATION OF ANY IMPLIED WARRANTY WHATSOEVER SHALL NOT EXTEND BEYOND THE DURATION OF THE EXPRESS WARRANTY PROVIDED HEREIN. INVACARE SHALL NOT BE LIABLE FOR ANY CONSEQUENTIAL OR INCIDENTAL DAMAGES WHATSOEVER.

THIS WARRANTY SHALL BE EXTENDED TO COMPLY WITH STATE/PROVINCIAL LAWS AND REQUIREMENTS.

Invacare Corporation

www.invacare.com



USA
One Invacare Way
Elyria, Ohio USA
44036-2125
800-333-6900

Canada
570 Matheson Blvd E Unit 8
Mississauga Ontario
L4Z 4G4 Canada
800-668-5324

© 2010 Invacare Corporation. All rights reserved.
Republication, duplication or modification in whole or in part is prohibited without prior written permission from Invacare. Trademarks are identified by ™ and ®. All trademarks are owned by or licensed to Invacare Corporation or its subsidiaries unless otherwise noted.

Yes, you can.®

Part No 1164899

Rev A - 06/10

